

Modular Buildings Save You Time and Money.

When time is of the essence, the quick construction time of modular buildings make them ideal for temporary or permanent weigh station applications. Modular buildings occupy 50% sooner and save up to 40% of cost vs. traditional “stick-built” construction.

Project Capsule: Missouri Department of Transportation Weigh Station - St. Clair, MO

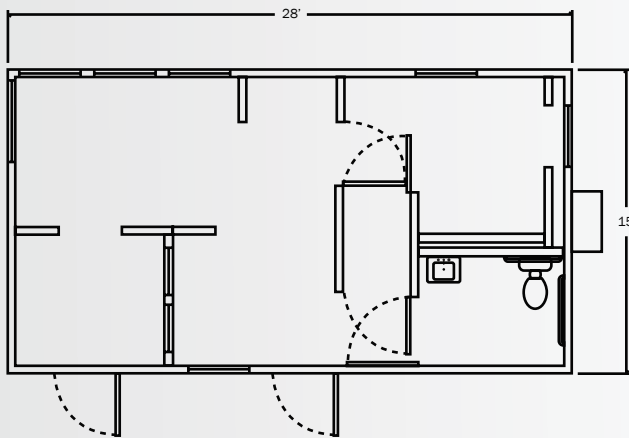
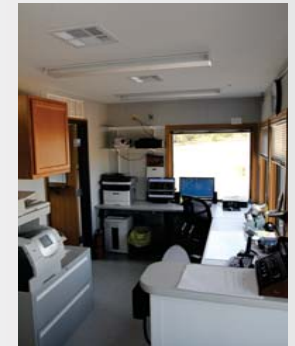
The Missouri DOT needed a low-cost solution for replacement of a previously damaged concrete block building. The building entry is a compact design which offers the user an efficient use of space at a cost effective price point. The layout provides for full view site lines to monitor traffic flow and an office arrangement for functionality. The exterior has a modest appearance but is aesthetically pleasing and conforms to its surroundings.



Pac-Van, Inc. provided the MODOT a simple design with standard factory features that solved the customer's needs. On-site modifications by the customer included, state of the art data/communication and monitoring systems, exterior ground level lighting to aid truck inspections and special glass partitions in the driver area for secure interaction with personnel.



Standard materials were used in the construction of the building which translated into significant cost savings vs. conventional construction. Features include, perimeter frame, VCT, VCG, seaspray ceiling, central HVAC, with a Hardipanel stucco exterior finish. The building was installed on the customer's concrete pad and lowered to aid with inspection of trucks. The building can be dismantled and transported easily to another location with minor expense.



Experience You Can Trust, Quality You Demand. Expect More. We'll Deliver.

With over 40 locations nationwide, we can design and install your modular building no matter where you need it. Ask us about our flexible rent, lease or purchase plans. Find out more about Pac-Van modular buildings at: www.pacvan.com/modular-buildings

800.586.1295

NATIONWIDE

