

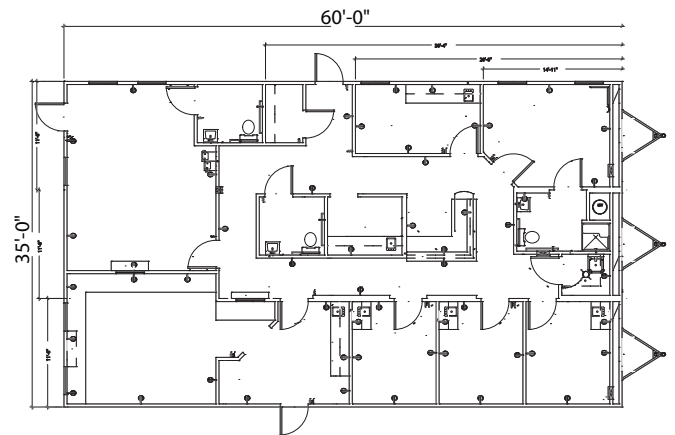
Modular Healthcare Facility - Rhea County Medical Center

Pac-Van modular medical buildings blend with your existing medical campus

The immediate need for this doctor's office was met in a timely manner and allowed the practice to open quickly. This was done by keeping the design of the modular simple yet providing the customer with a professional looking building. The exterior design lends itself to the landscape while matching the existing hospital on site.

The 2,160 sq. ft. building contains multiple exam rooms, a waiting/reception room, and a centrally located nurse's station. The doctor's office has a private shower/restroom. A custom carpet was installed in this large office after setup. All the exam rooms have overhead cabinets and sinks. The reception and collection rooms have 36x36 sliding glass windows for interacting with patients. The floorplan was designed with a circular flow of patients in mind.

The exterior of the building is a stucco hardi-panel with a rubber roof and is painted to match the hospital that is located across the parking lot. The main entrance into the building is at ground level and gives the modular a "pit set" look. This 36x60' modular building is actually a "pier set" which allows for relocation if needed.



Experience You Can Trust - Quality You Demand

When time is of the essence, the quick construction time of modular buildings make them ideal for medical facilities. Pac-Van offers flexible lease or purchase plans. Learn more about modular buildings at: www.pacvan.com/modular-buildings

Nationwide 800.586.1295

We've put thousands of U.S. businesses in space™
Modular Buildings - Mobile Offices - Storage Equipment

Pac-Van™