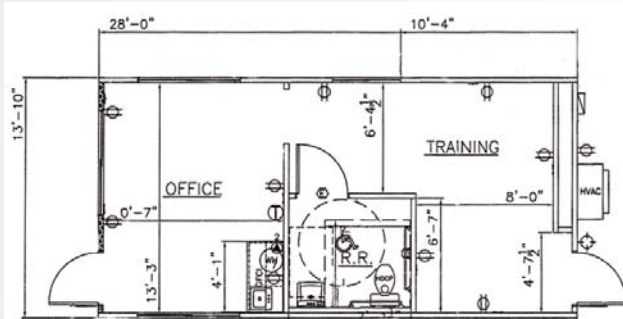




EXPECT MORE. WE'LL DELIVER.™

MODULAR GUARD SHACK



Project Capsule: Resolution Copper Guard Shack

This building is a 14'x28' single module with a steel perimeter frame that sits directly on a finished concrete slab. It includes a 2.5" to 12" mono pitch roof slope with aesthetically pleasing roof shingles. The exterior wall material consists of 7/16" Smart Panel. The guard shack has two 6080 steel patio doors on each side of the building that slide open for easy access to individuals entering and exiting the site. The front of the building offers great visibility by means of a 6040 dual glazed window.



Experience You Can Trust, Quality You Demand. Expect More. We'll Deliver.

When time is of the essence, the quick construction time of modular buildings make them ideal for temporary or permanent space needs. Modular buildings occupy 50% sooner and save up to 40% of cost vs. traditional "stick-built" construction. With locations nationwide, we can design and install your modular building no matter where you need it. Ask us about our flexible rent, lease or purchase plans. To learn more about Pac-Van modular buildings go to: www.pacvan.com/modular-buildings.