

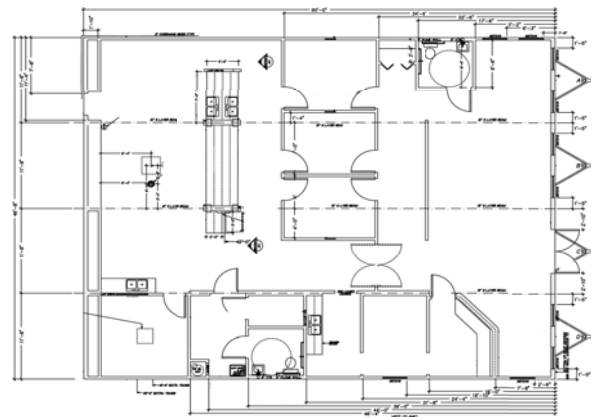
Modular Veterinary Clinic - Winchester Road

Permanent modular buildings offer significant time savings

This custom 2,880 square foot modular veterinary clinic features a perimeter frame with steel floor joists directly in the frame. The double-layered T&G plywood applied directly to the frame provides a strong weight load for medical equipment. Raised accents around the exterior doors and windows, and corner coins add depth and contrast to the split faced block foundation. Custom metal roofing provides a pitched roof appearance.

The interior is highlighted with earth tone wall finishes, custom cabinetry and ceramic tile throughout the entire building. Ceramic tile bull nose is used for base cove.

The clinic was completed in 90 days; in a third of the time of stick-built construction, and also offered a 65% cost savings over traditional construction.



Experience You Can Trust - Quality You Demand

When time is of the essence, the quick construction time of modular buildings make them ideal for medical facilities. Pac-Van offers flexible lease or purchase plans. Learn more about modular buildings at:

www.pacvan.com/modular-buildings

Nationwide **800.586.1295**

We've put thousands of U.S. businesses in space™
Modular Buildings - Mobile Offices - Storage Equipment



Pac-Van, Inc. is a General Finance Corporation company. NASDAQ: GFN