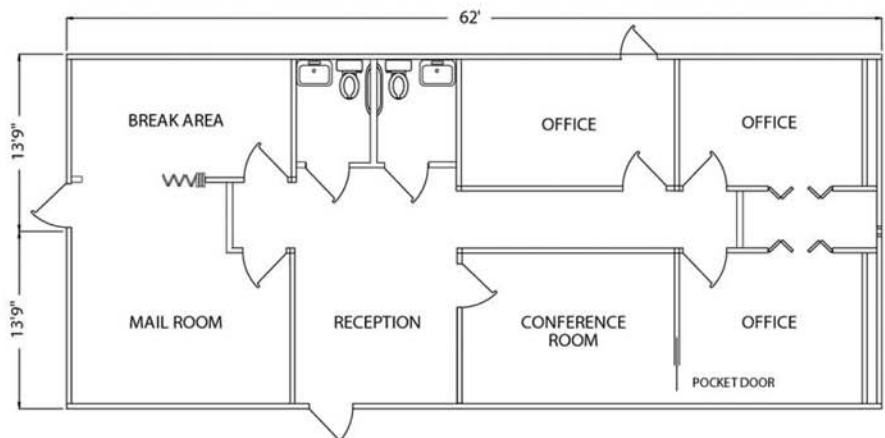


Modular Offices



Innisbrook Condominium Association Executive Offices

This beautiful 1,736 square foot modular building is utilized as office space for the Executive Offices for the Condominium Association at Innisbrook. The main objective of this project was to create a modular building that matched the existing condos on the property. The customer also wanted to insure that the new building would blend in with the wooded lots that surround the grounds. To do this, hardi-panel lap siding was used on the mansard roof and on the building itself. The building was then painted the exact color of the existing condos to maintain the look and feel of the space.



Experience You Can Trust - Quality You Demand

When time is of the essence, the quick construction time of modular buildings make them ideal for Association offices. Pac-Van modular buildings are built from the same durable materials as traditional construction and meet all prevailing state and local codes.



www.pacvan.com

Nationwide **800.586.1295**