

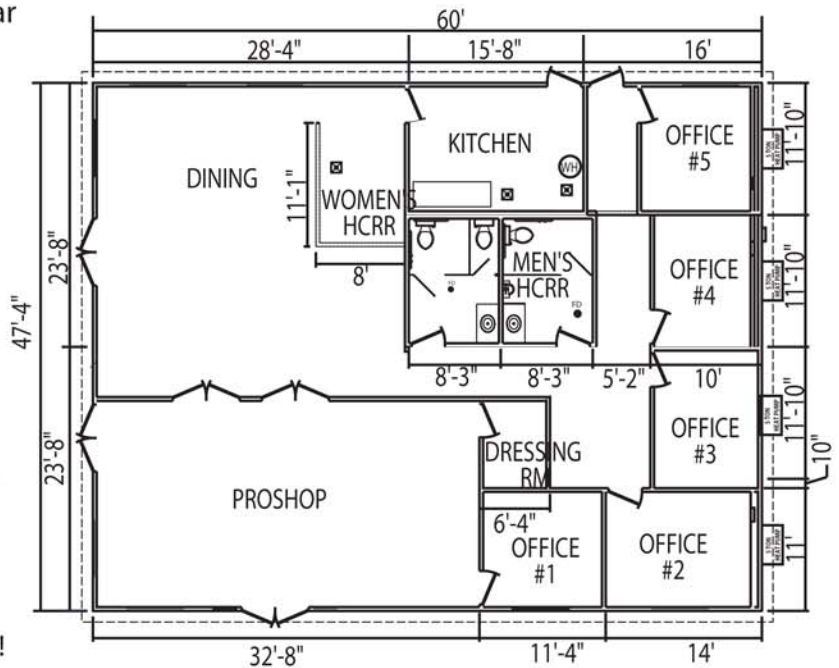
Modular Golf Clubhouse

Somerset Country Club



This 2,880 square foot temporary modular building was developed for Somerset Country Club. It was designed to blend in with the community it serves with its Tudor Style & lapboard exterior double french doors. Taped & textured with a trowel finish & adorned with chair rail & crown molding, this building capitalizes on its 10' ceilings. Ceiling fans allow for great comfort & efficiency of the heat pumps. Architectural roof shingles accentuate the broad mansard. The rectangular configuration allows the perfect spacing for the bar & lounges, a pro-shop, office & conference area & oversized rest rooms.

This building was completed in only 30 days!



Experience You Can Trust - Quality You Demand

When time is of the essence, the quick construction time of modular buildings make them ideal for club houses. Pac-Van modular buildings are built from the same durable materials as traditional construction and meet all prevailing state codes.



www.pacvan.com

Nationwide **800.586.1295**