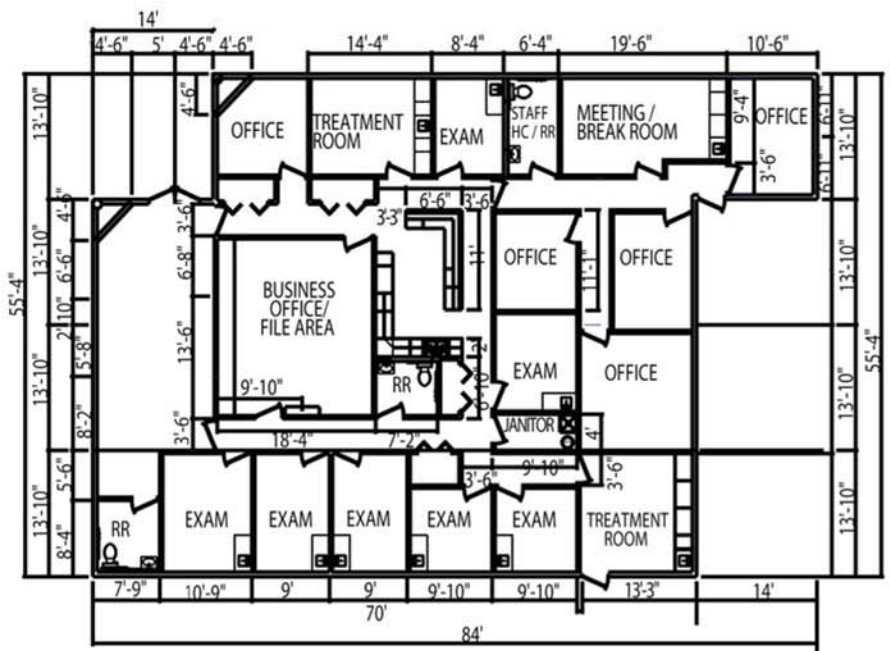


Modular Medical Facility

Grover Dills Medical Center



This 4,032 square foot modular building is used as a medical center. The clinic's entry is formed by off setting modules to create a covered entry with columns & glass block windows on each side of the double store front entry. Parapet walls give height to the stuccoed exterior façade. Ceilings extend to 9', giving an air of spaciousness. The horseshoe hallway allows for private space for a staff break room & doctors offices with a private entrance. This project was completed in 30 days!



Experience You Can Trust - Quality You Demand

When time is of the essence, the quick construction time of modular buildings make them ideal for medical facilities. Pac-Van modular buildings are built from the same durable materials as traditional construction and meet all prevailing state codes.



www.pacvan.com

Nationwide **800.586.1295**